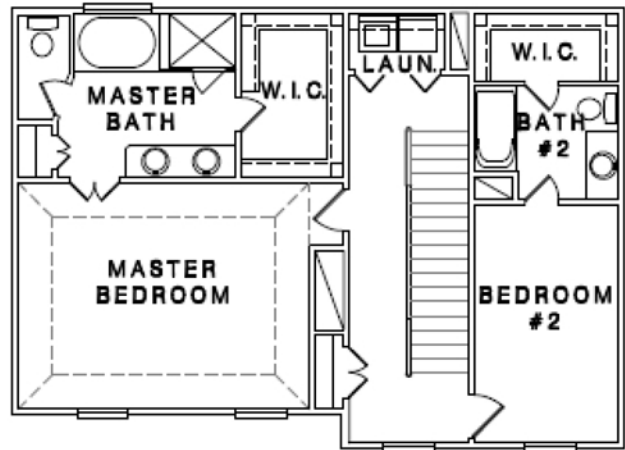
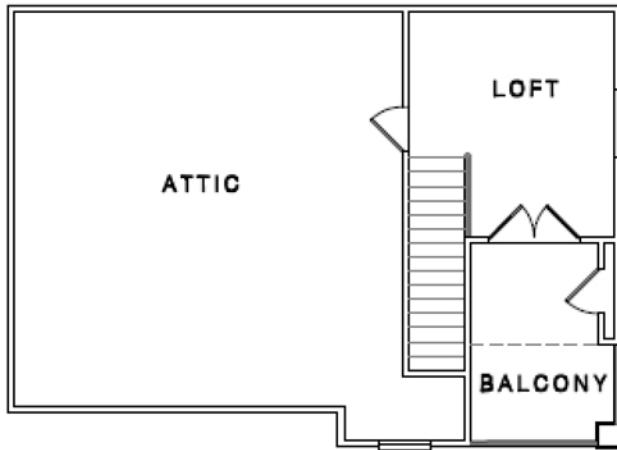




1212.D Edwards St.

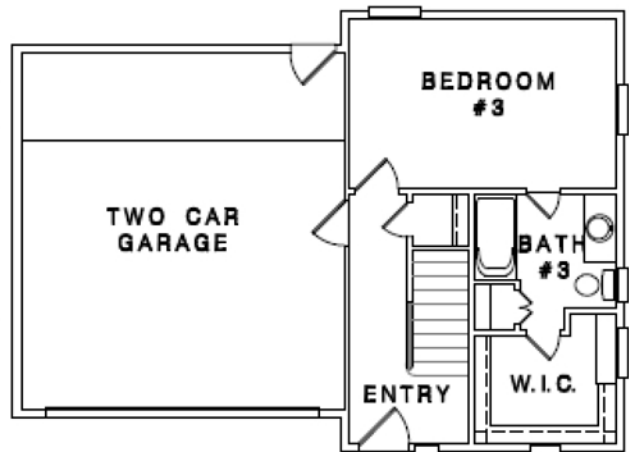
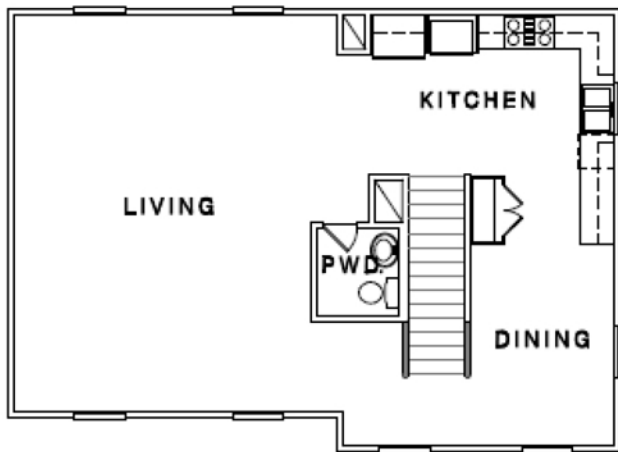
2385 Sqft / 3 Bedroom / 3.5 Bath / Open Design
4th Floor Rooftop Terrace & Loft

ENCLAVE *at* Edwards



BALCONY FLOOR PLAN

THIRD FLOOR PLAN



SECOND FLOOR PLAN

FIRST FLOOR PLAN